



## KNOWLEDGE IS POWER

WSG is the premier provider of high-quality subsurface geophysics data. With experience across commodities ranging from Iron to Gold to Lithium and Coal to Uranium, we offer solutions for many applications. We cater for your needs in a wide range of environments including Diamond drilling, Reverse Circulation drilling, Underground mines and Blast holes.

WSG's versatile range of data acquisition platforms including Mine Site Trucks, Light Vehicles, ATVs, underground units, and heliportable pods for the really hard-to-reach places. We operate in Diamond, RC, underground and Blast holes.

Safety and Service Quality are our bywords. We have experienced logging engineers qualified for mine site work even in the most challenging environments. Our Data Interpretation Centre is staffed by a team

of geoscientists focussed on quality control and integrated interpretive solutions for a wide range of applications.

### Accurate & Insightful Solutions, From the First Byte

Get maximum benefits from each and every data set. Whether you need basic, specialty or customized analysis, our in-house expert teams of geologists and geophysicists can ensure you get the very best in data-based solutions.

Whether you are in the discovery phase, resource definition stage, or are digging deeper into understanding the structure or hydrogeological flow, we have an application for you.

#### Discovery & Characterisation

- Ore body mapping
- JORC compliant density modelling
- Grade Control
- Equivalent Dry Bulk Density modelling
- Ore body vectoring
- Grade Control

#### Geotechnical & Televiewer (Image) Analysis

- Structure characterisation/mapping
- In-situ stress analysis
- Core orientation
- Vein & contact orientation & tracking
- Paste hole and backfill inspections

#### Groundwater Solutions

- Moisture mapping
- Water quality
- Well monitoring
- Porosity and permeability
- Brine characterisation
- Hydraulic conductivity

#### Casing Integrity

- Cement Bond Analysis
- Casing Integrity





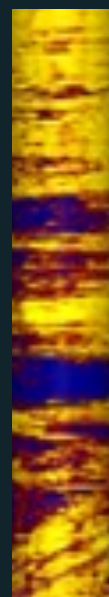
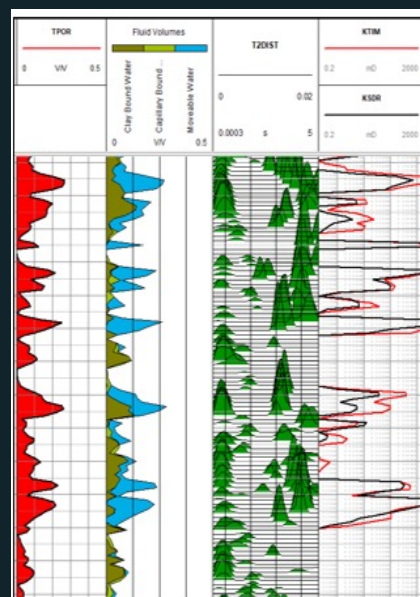
WE ARE OREBODY KNOWLEDGE



## Our Tool Suite

- Directional (Driller or wireline operated)
- Gamma (In-rod (driller operated) and Open Hole)
- Spectral Gamma and Triple Gamma
- Density (In-rod and open hole) and PhotoElectric
- Neutron Porosity
- Magnetic Susceptibility
- Tri-axial Callipers
- Resistivity/Conductivity/SP
- Induced Polarisation
- Optical and Acoustic Televiewers for High Resolution Downhole Imaging
- Radar (for imaging structures away from the borehole)
- Full Waveform Sonic
- Flowmeters

**...and more** – ask us about our cutting edge technology!



**MORE INFORMATION?**

**CALL:** +61 8 6180 9300

**EMAIL:** [INFO@WIRELINESERVICES.COM.AU](mailto:INFO@WIRELINESERVICES.COM.AU)